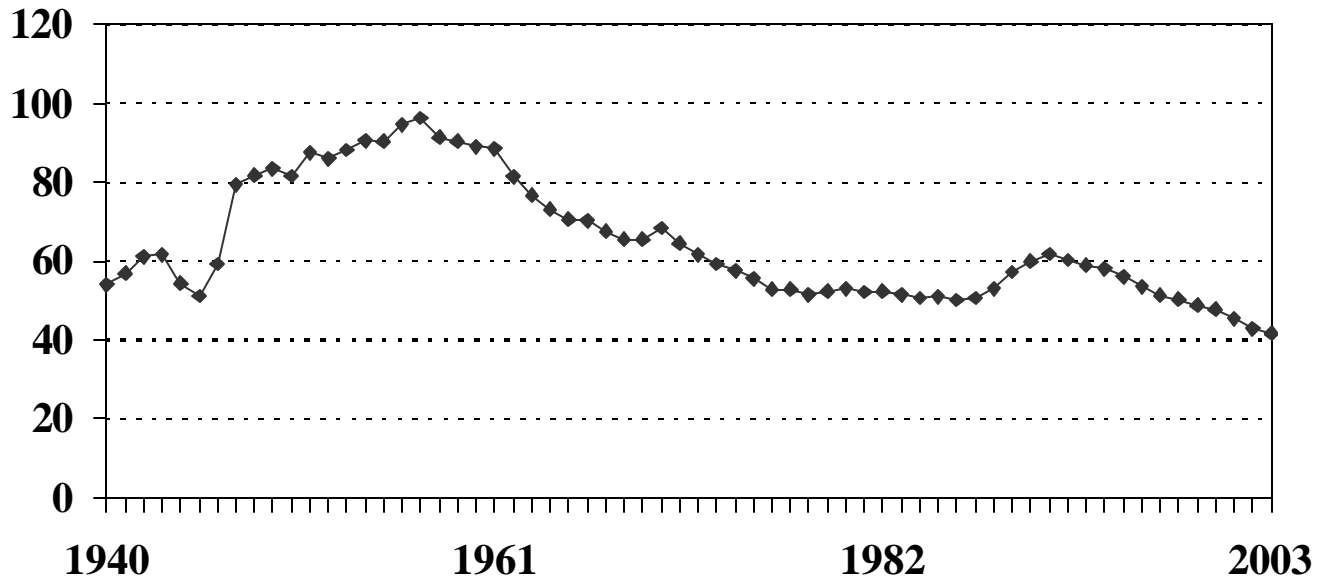


# Teen Birth Rates in the United States, 1940 – 2003

From 1940 to 1957, the teen birth rate increased 78 percent to a record high. The birth rate dropped fairly steadily from the end of the 1950s through the mid-1980s, but then increased 24 percent between 1986 and 1991. Between 1991 and 2003, the teen birth rate decreased 32.5 percent to a record low of 41.7 in 2003. The chart and table in this document reflect births per 1,000 teen girls aged 15-19 in the United States and are the most recent national data available. (\*Birthrates for 2003 are preliminary.)



<b>1940</b>	54.1	<b>1951</b>	87.6	<b>1962</b>	81.4	<b>1973</b>	59.3	<b>1984</b>	50.6	<b>1995</b>	56
<b>1941</b>	56.9	<b>1952</b>	86.1	<b>1963</b>	76.7	<b>1974</b>	57.5	<b>1985</b>	51	<b>1996</b>	53.5
<b>1942</b>	61.1	<b>1953</b>	88.2	<b>1964</b>	73.1	<b>1975</b>	55.6	<b>1986</b>	50.2	<b>1997</b>	51.3
<b>1943</b>	61.7	<b>1954</b>	90.6	<b>1965</b>	70.5	<b>1976</b>	52.8	<b>1987</b>	50.6	<b>1998</b>	50.3
<b>1944</b>	54.3	<b>1955</b>	90.3	<b>1966</b>	70.3	<b>1977</b>	52.8	<b>1988</b>	53	<b>1999</b>	48.8
<b>1945</b>	51.1	<b>1956</b>	94.6	<b>1967</b>	67.5	<b>1978</b>	51.5	<b>1989</b>	57.3	<b>2000</b>	47.7
<b>1946</b>	59.3	<b>1957</b>	96.3	<b>1968</b>	65.6	<b>1979</b>	52.3	<b>1990</b>	59.9	<b>2001</b>	45.3
<b>1947</b>	79.3	<b>1958</b>	91.4	<b>1969</b>	65.5	<b>1980</b>	53	<b>1991</b>	61.8	<b>2002</b>	42.9
<b>1948</b>	81.8	<b>1959</b>	90.4	<b>1970</b>	68.3	<b>1981</b>	52.2	<b>1992</b>	60.3	<b>2003</b>	41.7*
<b>1949</b>	83.4	<b>1960</b>	89.1	<b>1971</b>	64.5	<b>1982</b>	52.4	<b>1993</b>	59		
<b>1950</b>	81.6	<b>1961</b>	88.6	<b>1972</b>	61.7	<b>1983</b>	51.4	<b>1994</b>	58.2		